



*Thank you for choosing to decorate with Press Print Party!
My goal is to help you DIY your own amazing parties at home on a budget.*

Please read this page as it contains very important information about this set

How it Works

This pdf has no text fields and should open and work in any pdf viewer. However, I recommend you open the file in the latest FREE version of Adobe Acrobat Reader. You may download it here: <http://get.adobe.com/reader/> or in your phone's app store.

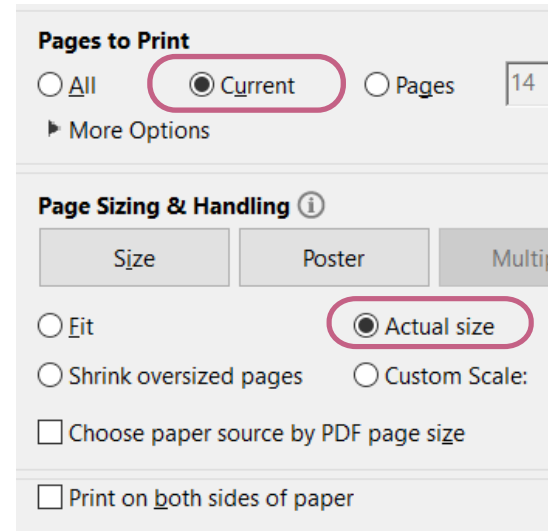


Printing

Set the Page Sizing to "**Actual Size**" in the Printer's dialog box. If you get an error message ignore it. If you run into more trouble choose "Fit".

Since most of my pdf contain many pages, make sure you set your print options to "**Current Page**".

You are authorized to print at an office store or professional printer for personal use.



Contact

Please feel free to contact me on Etsy or at:

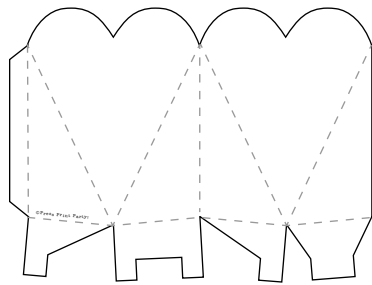
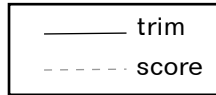
nathalie@pressprintparty.com

Check out my blog with lots of freebies at www.pressprintparty.com

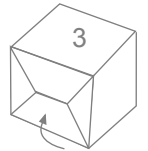
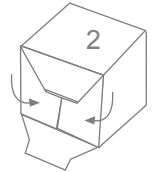
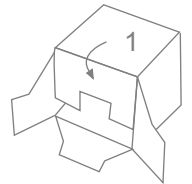
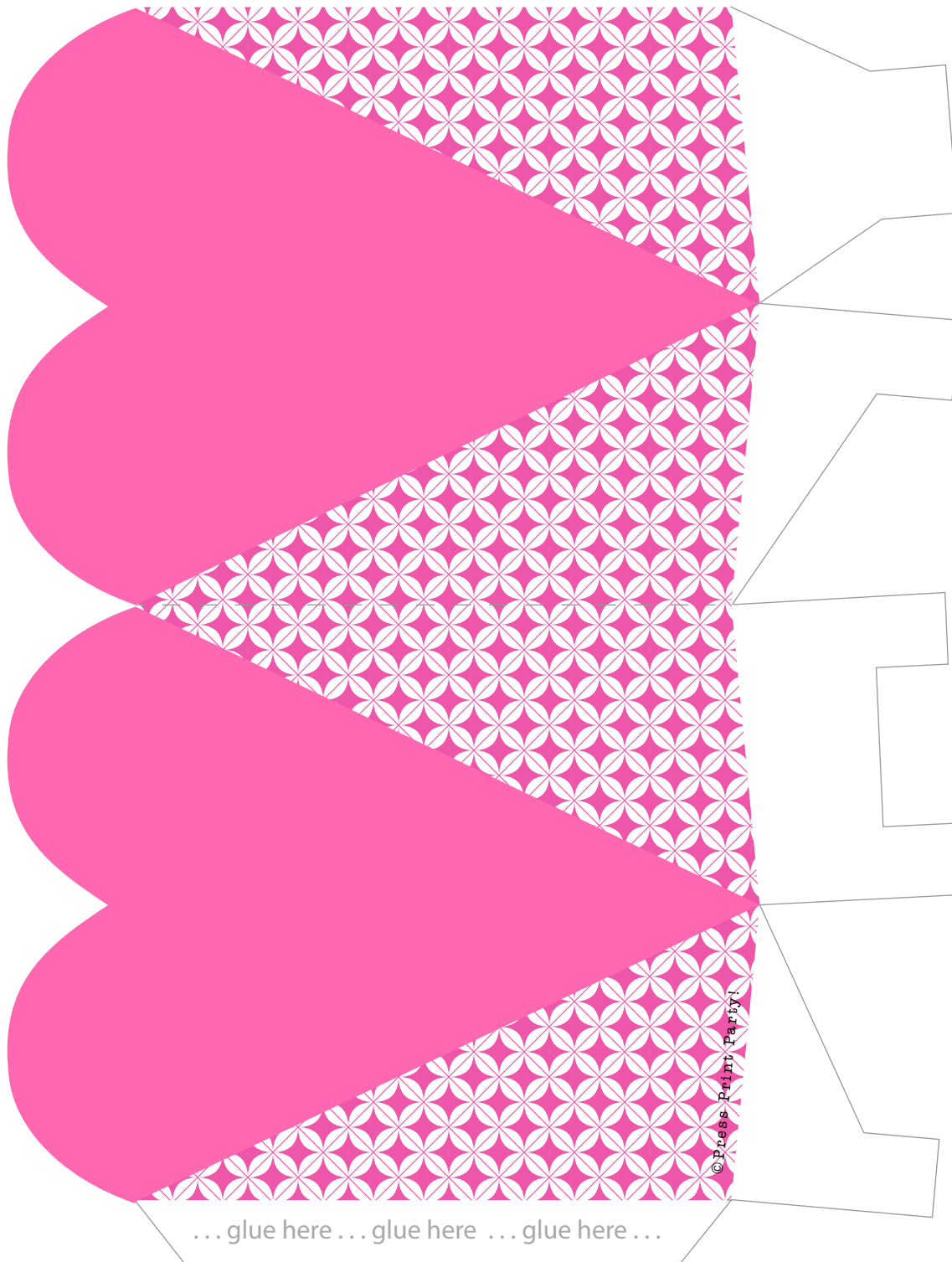
©Press Print Party. These files are for personal use only. Commercial use, reselling of printed items, mass production, and file sharing are prohibited. You may not extract any original graphics for commercial use, or use any graphics as part of a website, logo or similar. Thank you. You are authorized to print at a professional printer for personal use. Thank you.

Valentine's Heart Box

Instructions



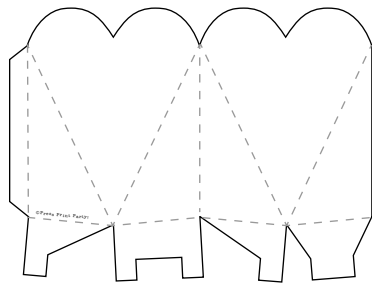
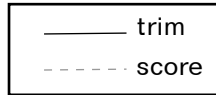
1. Print the page on card stock (80-110lb)
2. Cut out the outline of the box.
3. Score and fold the box using the dashed score lines on the schematic as your guide.
4. Pull the glue flag around and glue it to the inside of the box.
5. Close the bottom flaps in this fashion:



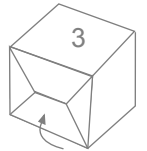
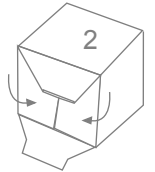
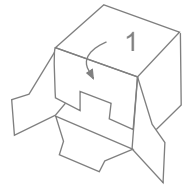
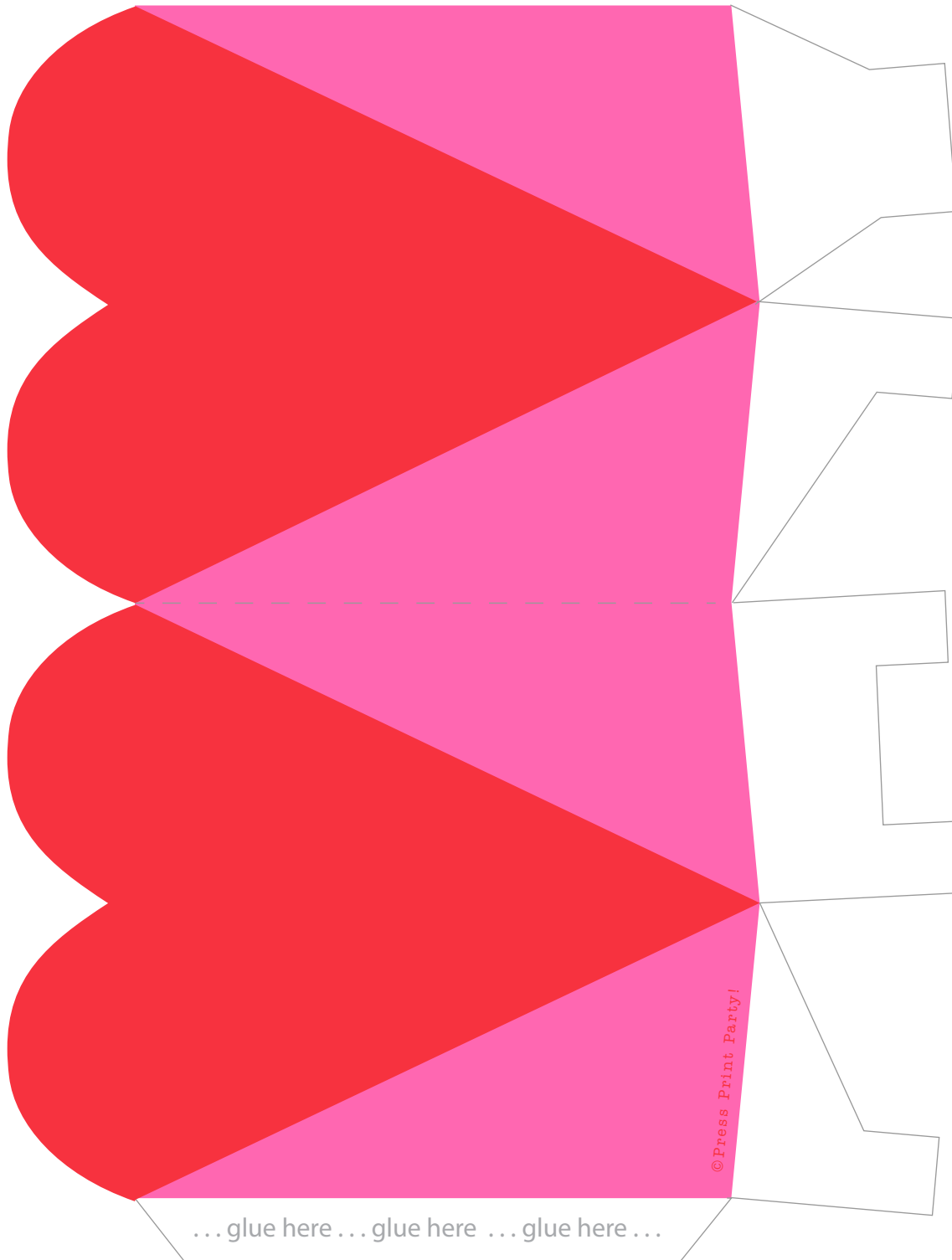
push flap in.

Valentine's Heart Box

Instructions



1. Print the page on card stock (80-110lb)
2. Cut out the outline of the box.
3. Score and fold the box using the dashed score lines on the schematic as your guide.
4. Pull the glue flag around and glue it to the inside of the box.
5. Close the bottom flaps in this fashion:

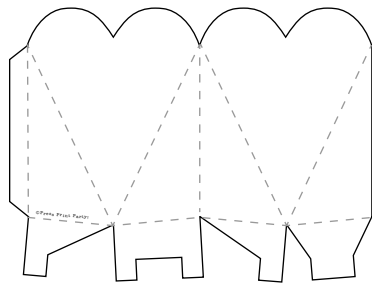
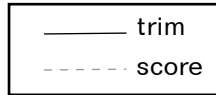


push flap in.

© Press Print Party!

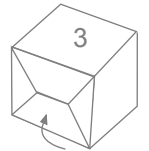
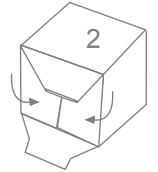
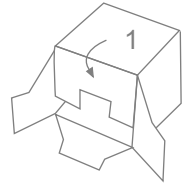
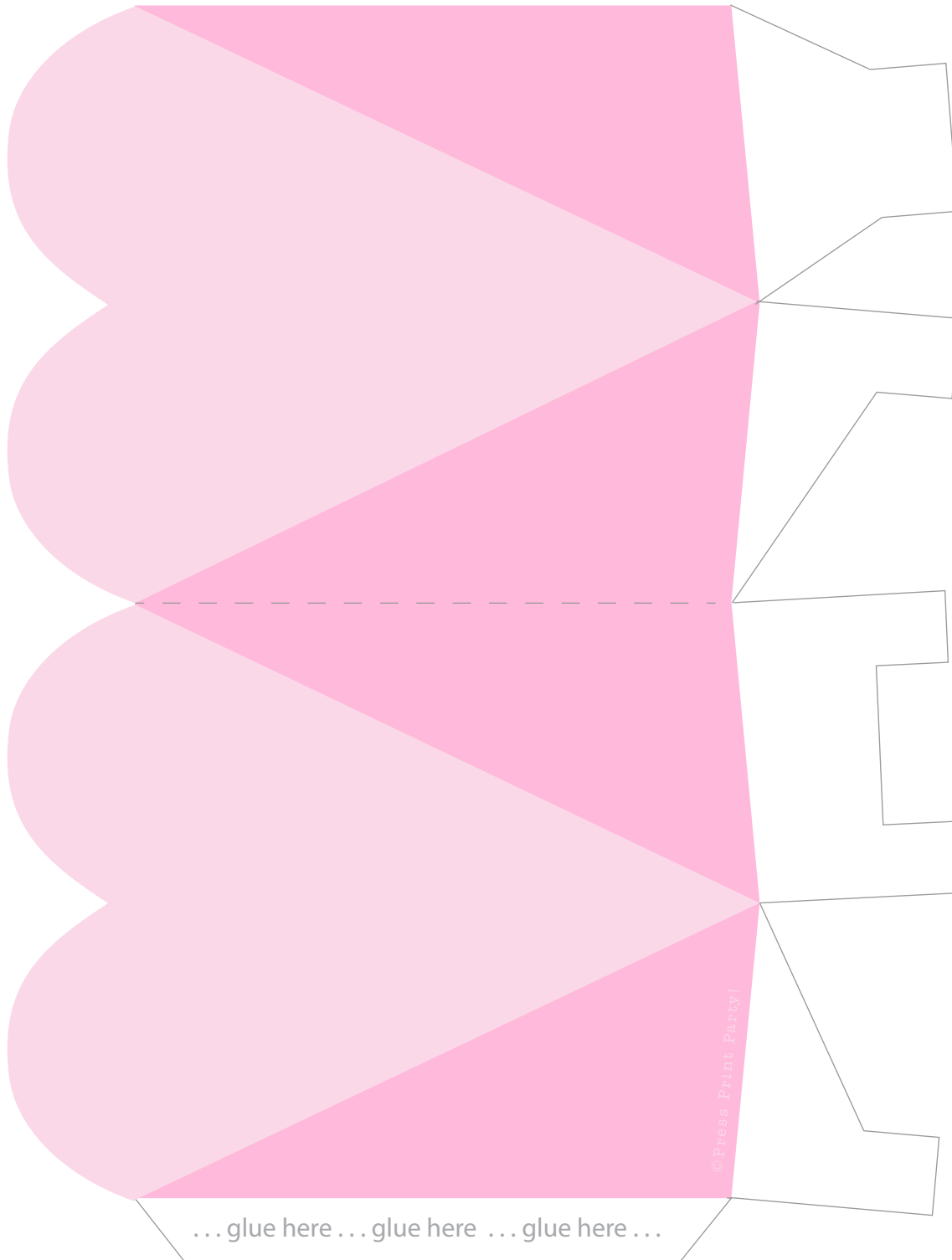
© Press Print Party!

Valentine's Heart Box



Instructions

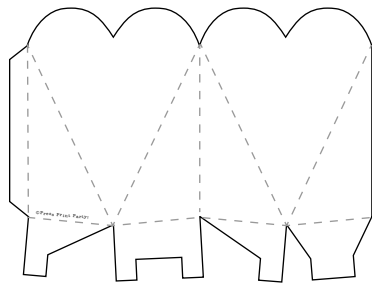
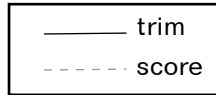
1. Print the page on card stock (80-110lb)
2. Cut out the outline of the box.
3. Score and fold the box using the dashed score lines on the schematic as your guide.
4. Pull the glue flag around and glue it to the inside of the box.
5. Close the bottom flaps in this fashion:



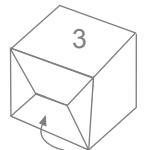
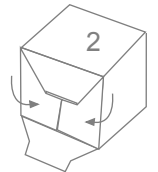
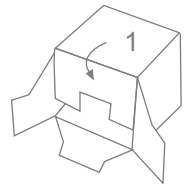
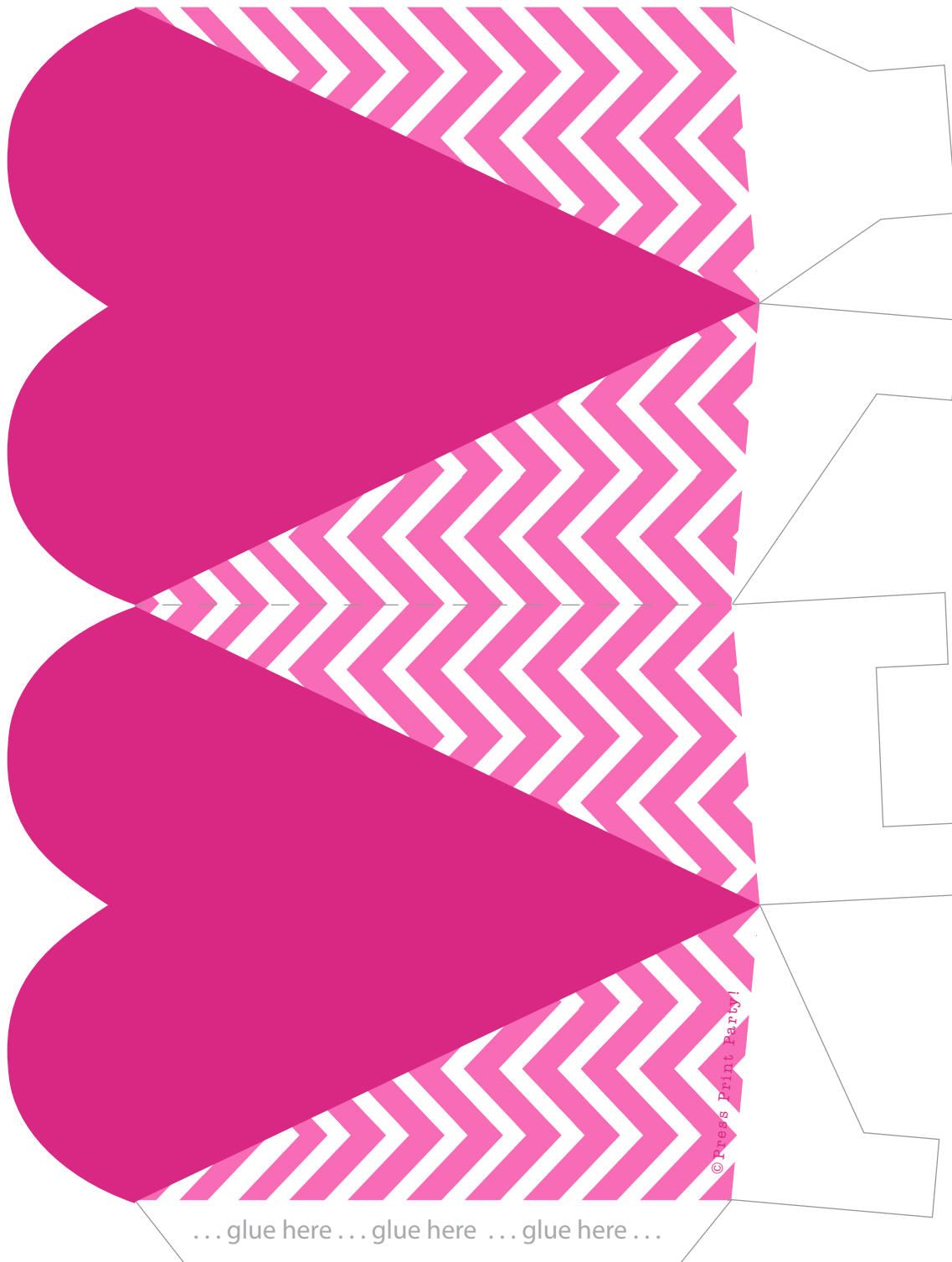
push flap in.

Valentine's Heart Box

Instructions



1. Print the page on card stock (80-110lb)
2. Cut out the outline of the box.
3. Score and fold the box using the dashed score lines on the schematic as your guide.
4. Pull the glue flag around and glue it to the inside of the box.
5. Close the bottom flaps in this fashion:



push flap in.